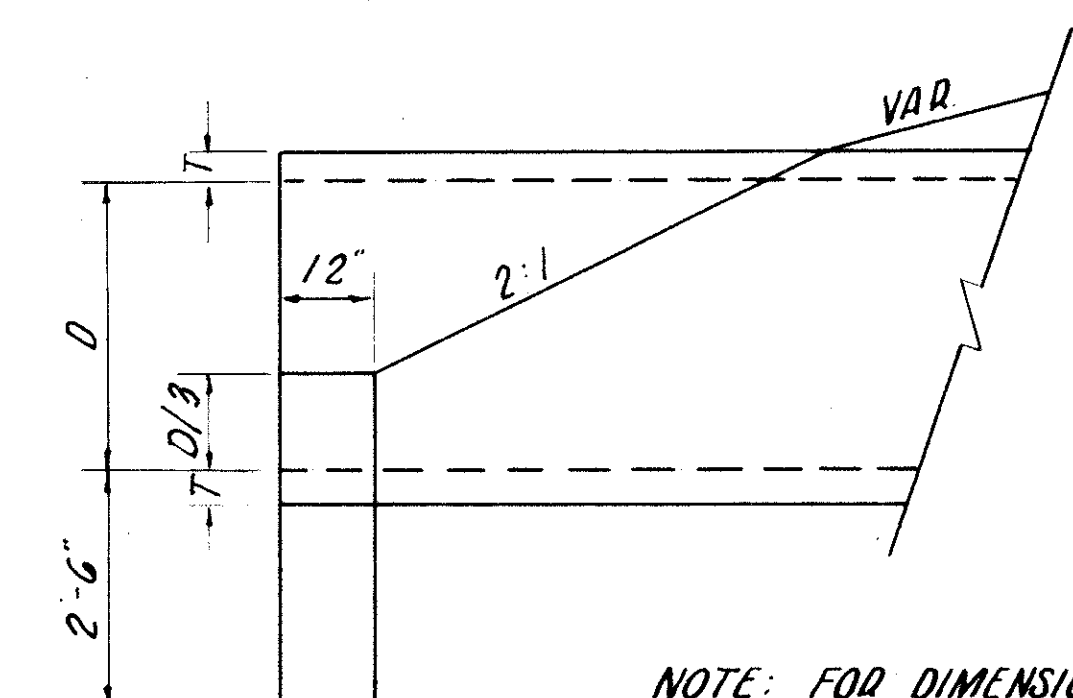
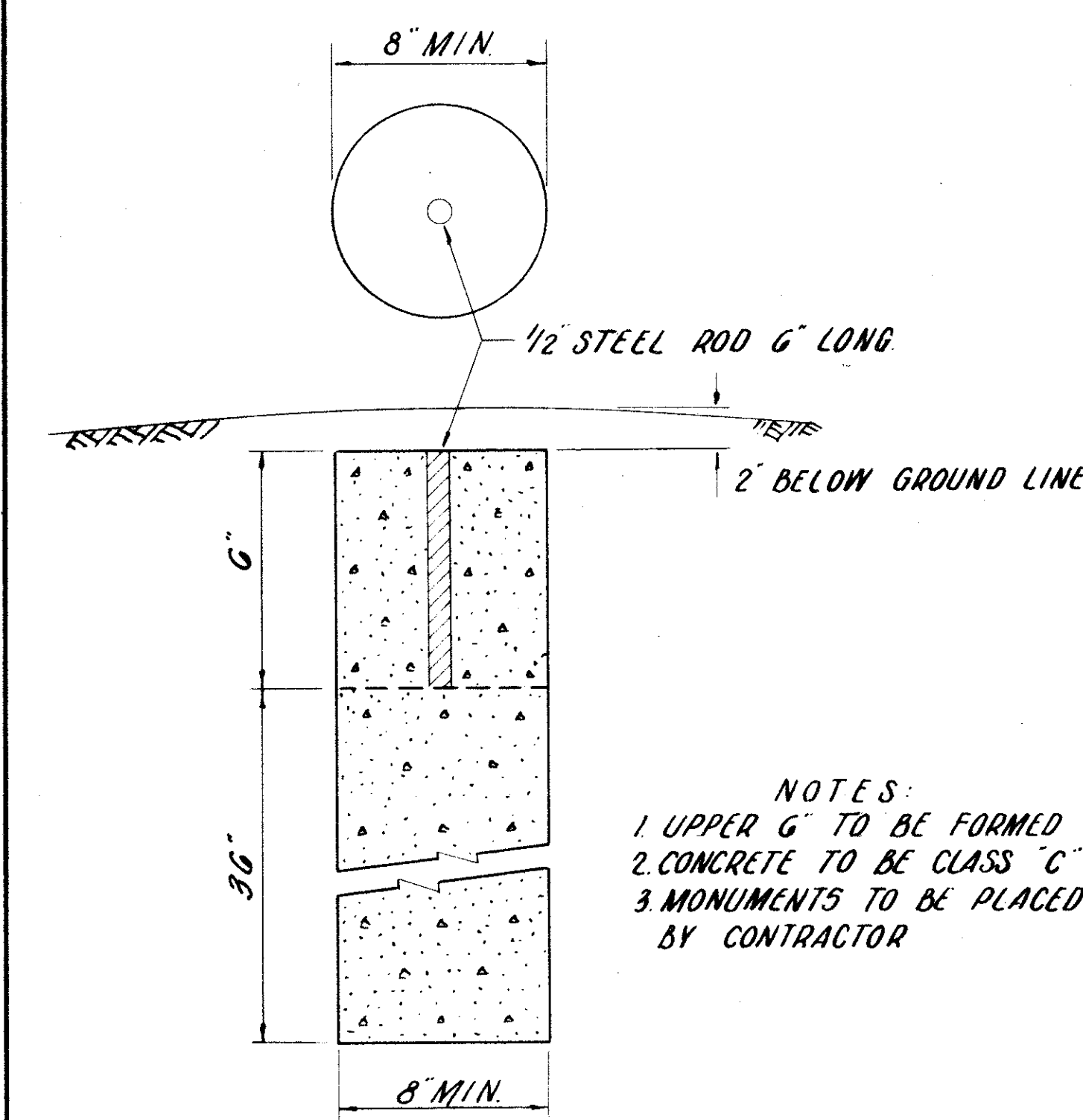


DETAIL OF SOD AT PAVED GUTTERS



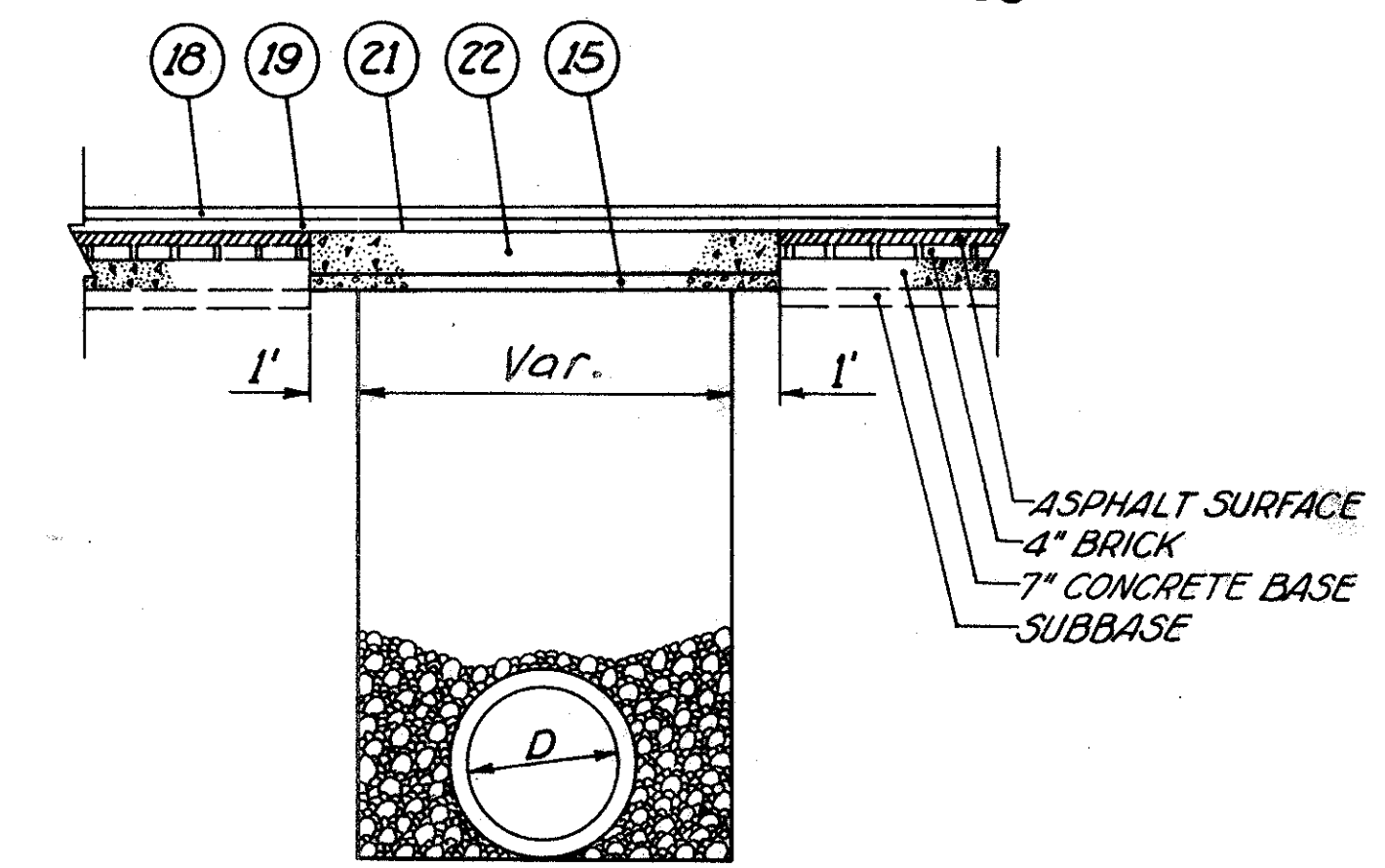
NOTE: FOR DIMENSIONS & DETAILS NOT SHOWN SEE STANDARD DRAWING HW-E

DETAIL OF SLOPE TREATMENT AT HW-E ENDWALLS



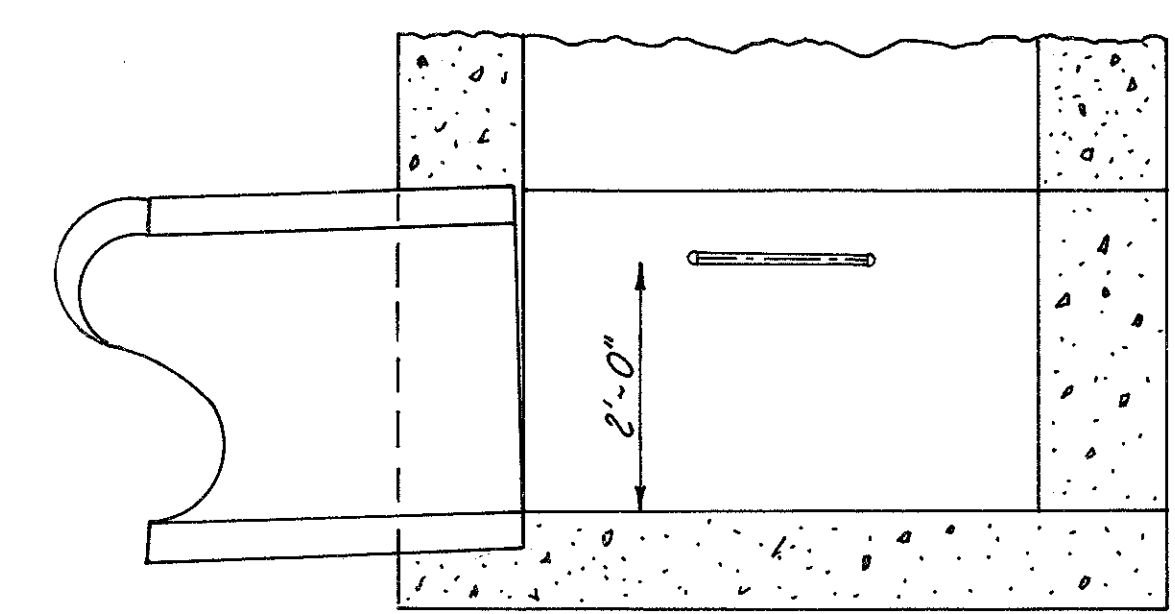
NOTES:
1. UPPER 6" TO BE FORMED
2. CONCRETE TO BE CLASS "C"
3. MONUMENTS TO BE PLACED BY CONTRACTOR

CENTERLINE REFERENCE MONUMENT DETAIL

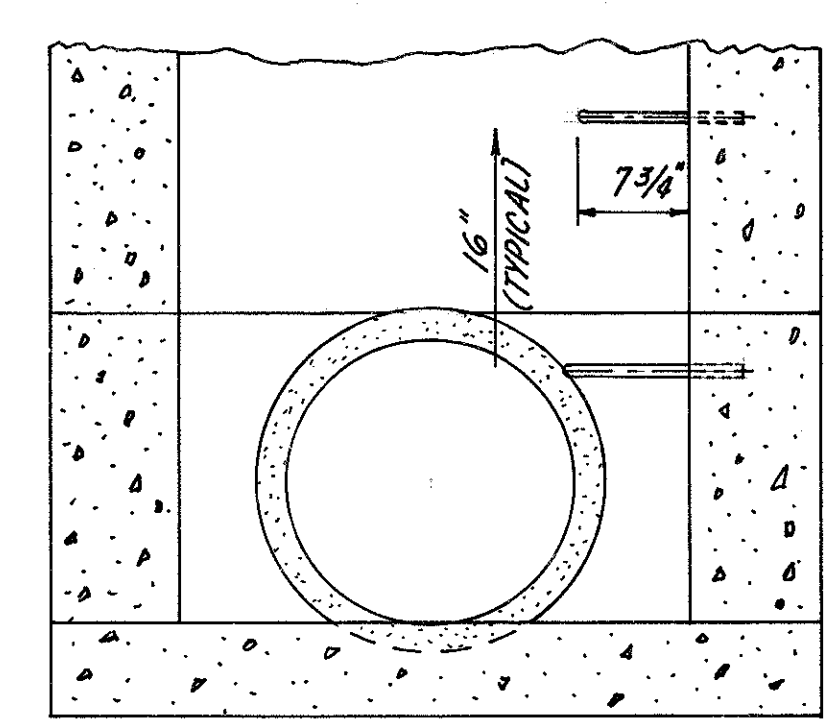


- 15 I-19 3" INSULATION COURSE & SUBBASE
- 18 T-35 1 1/4" ASPHALTIC CONCRETE SURFACE COURSE, TYPE "C" (70-85)
- 19 B-35 1 1/4" ASPHALTIC CONCRETE LEVELING COURSE (70-85)
- 21 T-30 BITUMINOUS TACK COAT, SEC. M-55, MS-2 or RS-1, or SEC. M-52, RC-1 or RC-2 AS PER SEC. T-30.02 APPLIED AT THE RATE OF 0.10 GALS. PER SQ. YD.
- 22 B-70 8" PORTLAND CEMENT CONCRETE BASE COURSE

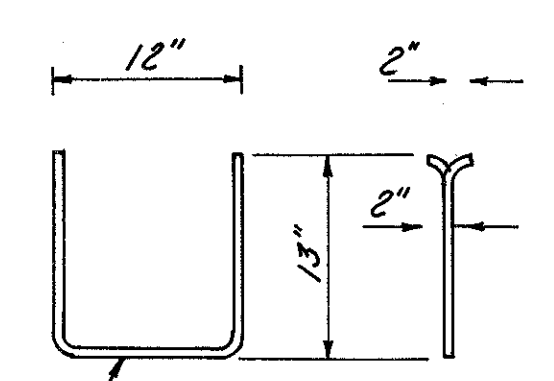
BASE REPLACEMENT TYPICAL



SIDE VIEW

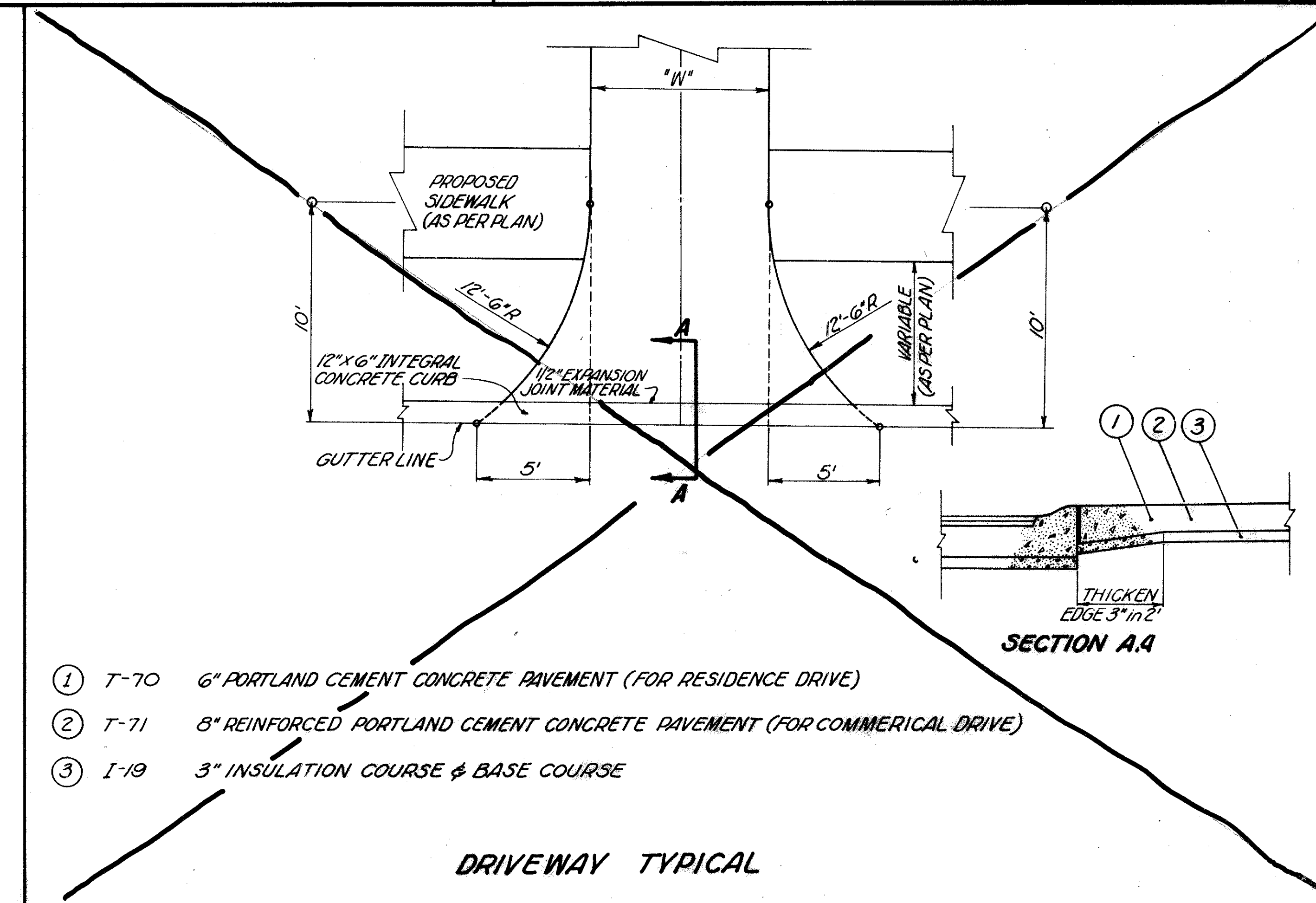


END VIEW



STEP DETAIL

STEP DETAIL for I-8 CATCH BASINS & INLETS



- 1 T-70 6" PORTLAND CEMENT CONCRETE PAVEMENT (FOR RESIDENCE DRIVE)
- 2 T-71 8" REINFORCED PORTLAND CEMENT CONCRETE PAVEMENT (FOR COMMERCIAL DRIVE)
- 3 I-19 3" INSULATION COURSE & BASE COURSE

DRIVEWAY TYPICAL